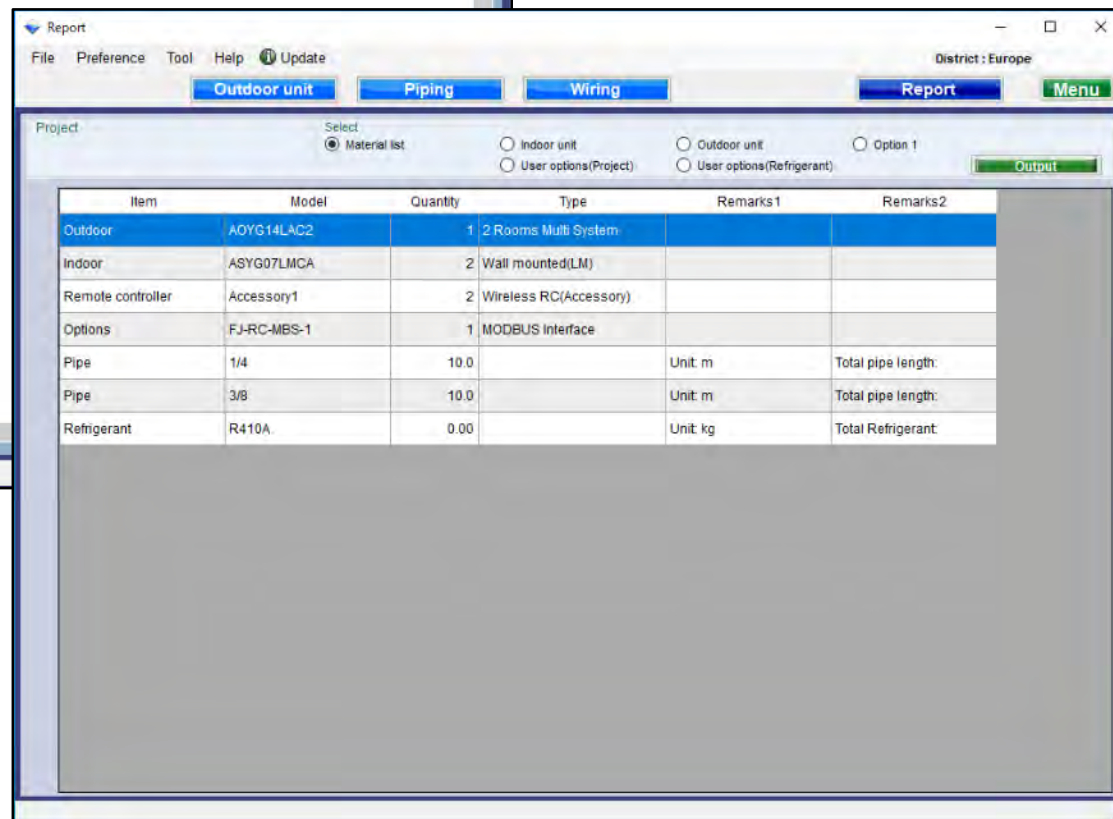


Izaberite "Izveštaj"

Promeni izveštaj na početnom ekranu



The screenshot shows the 'Report' window of the Design Simulator. The window has a menu bar with 'File', 'Preference', 'Tool', 'Help', and 'Update'. Below the menu bar are buttons for 'Outdoor unit', 'Piping', 'Wiring', 'Report', and 'Menu'. The 'Report' button is highlighted. The window displays a table with the following data:

Item	Model	Quantity	Type
Outdoor	AOYG14LAC2	1	2 Rooms Multi System
Indoor	ASYG07LMCA	2	Wall mounted(LM)
Remote controller	Accessory1	2	Wireless RC(Accessory)
Options	FJ-RC-MBS-1	1	MODBUS Interface
Pipe	1/4	10.0	
Pipe	3/8	10.0	
Refrigerant	R410A	0.00	

Below the table, there is a large grey area. To the right of the table, there are several callout boxes:

- Izaberite "Lista materijala"** (Select "Material list")
- Moguće je da potvrdite podatke** (It is possible to confirm the data)
- Ukupna lista materijala** (Total material list)
- Specifikacija unutrašnjih jedinica** (Specification of indoor units)
- Specifikacija spoljnih jedinica** (Specification of outdoor units)
- Svi opcioni delovi** (All optional parts)

A blue arrow points from the 'Ukupna lista materijala' box to a larger box below it:

- Izvoz podataka u WORD, CSV, and DXF formate** (Export data in WORD, CSV, and DXF formats)
- Spisak svakog uređaja (List of every device)
- Dijagram sistema cevovoda (Pipe system diagram)
- Dijagram ožičenja (Wiring diagram)
- Informacije o cevovodu po sistemu (Information about the pipe system)
- Količina punjenja rashladnog fluida po sistemu (Refrigerant charge quantity by system)
- Lista opcionih delova (List of optional parts)